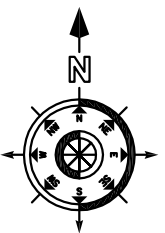
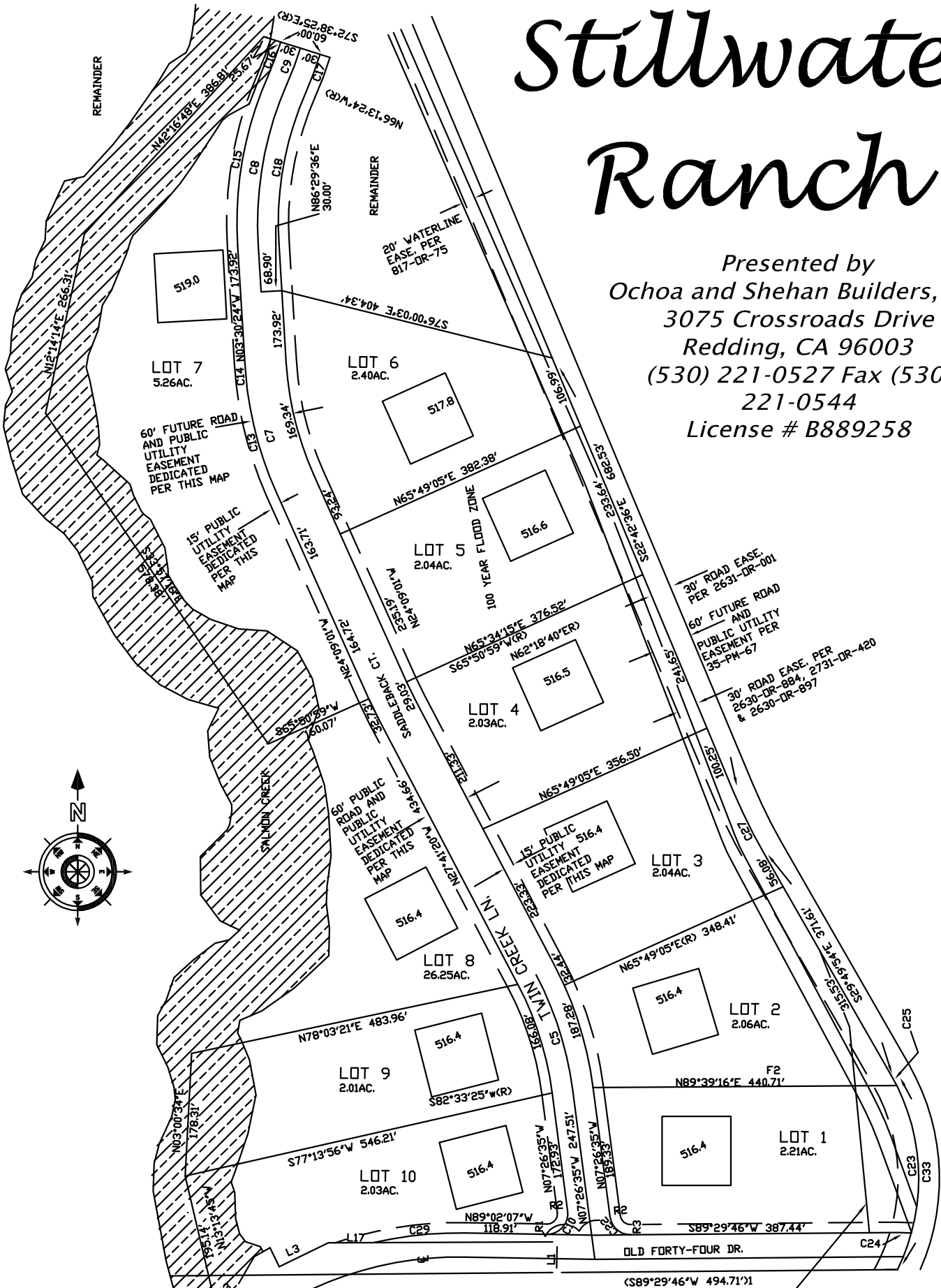


Stillwater Ranch

Presented by
 Ochoa and Shehan Builders, Inc.
 3075 Crossroads Drive
 Redding, CA 96003
 (530) 221-0527 Fax (530) 221-0544
 License # B889258



DISCLAIMER

THIS DOCUMENT IS AN ARTIST'S RENDITION.

THIS INFORMATION IS NOT INTENDED FOR ANYTHING OTHER THEN A GENERALIZED OVERVIEW. IT HAS NO LEGAL BEARING IN REFERENCES FOR DISTANCES, EASEMENTS OR RIGHT OF WAY ISSUES. FOR COMPLETE SUBDIVISION DETAILS REFER TO THE RECORDED MAP AT THE SHASTA COUNTY COURT HOUSE.

CL PG&E EASEMENT PER 217-DR-128